



Compact and stylish desk-top unit providing flexible modular power and data distribution; ideal for office desks and screens. PULSE 'floats' above the desk releasing the desktop and takes its design influence from modern life – clean, simple lines with no-nonsense understated function and uncompromising style.

PULSE can be manufactured to meet specific requirements with mains power sockets formats for most countries together with a wide range of data outlets.

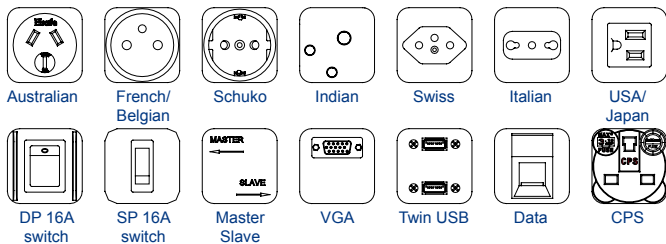
PULSE continues Office Electrics 'soft' theme with interchangeable fixings to suit any desk location, including screens. Please specify when requesting a quote

Standard colours are grey and white (except certain countries which will be black and white)

All Office Electrics products are manufactured to enable compliance with BS6396 or BS7671 where relevant.

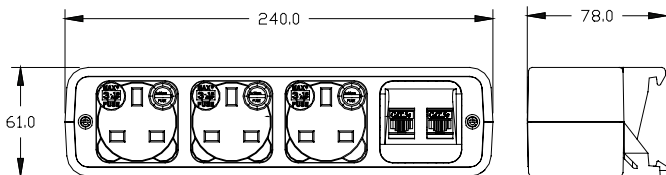


Common Modular Components*



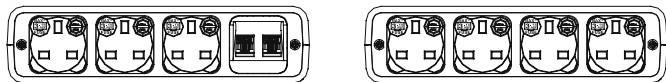
*see website for more

Unit dimensions



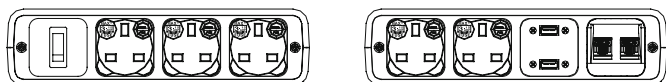
Common Units

Other configurations are available on request



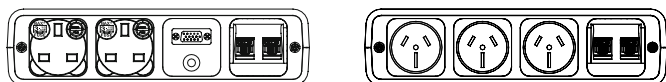
Pulse 1001

Pulse 1002



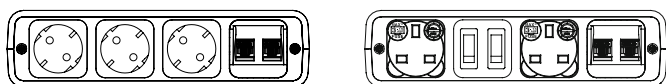
Pulse 1005

Pulse 1007



Pulse 1008

Pulse 1009



Pulse 1010

Pulse 1011

Standard Fixings

- PCB Clamp Bracket 18 - 35mm
- PEC Clamp Bracket (Extended) 38-55mm⁺
- PLC Clamp Bracket (Long-Reach) 18-35mm⁺
- PTR Tool rail fixing*
- HTC HT Beam fixing

*Please call to confirm screen/toolrail compatibility

+Available on application

Features

Configuration:

Power only / Data only / Combined (Power & Data/AV)
Internal segregation between Power and Data/AV in combined PULSE

Insulation:

Re-inforced insulation

Earth Bonding:

A 250mm earth lead can be included to allow earth bonding to furniture.

Fusing: (to enable compliance to BS6396)

5 x 20mm anti-surge ceramic fuses, with colour-coded fuseclips to denote the rating (3.15A/5A)

Testing:

100% testing - continuity, polarity, insulation & earth

Soft Wiring (power)

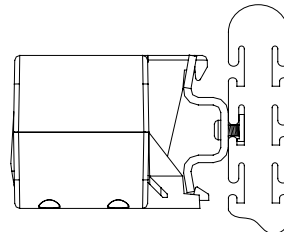
Power wired to Wieland ST/GST connector allows starter cables to be changed to suit requirements, especially useful during moves and changes (CHURN)
Angled cable grip means the cable can exit via the rear or the bottom without the need for tools, allowing flexibility for mounting PULSE

Soft Wiring (data)

As well as soft-wired power, PULSE can accommodate soft wired data. Using our inline couplers, data cables can be changed "on-site" to accommodate changes in length often associated with churn.

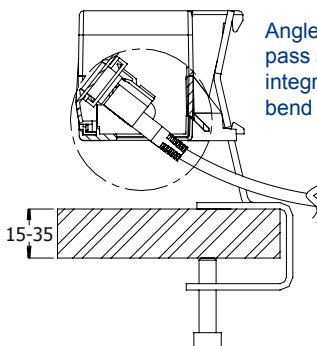
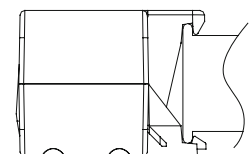
PTR - Screen Fixing

Standard tool-rail bracket
Please call for confirmation



HTC - HT Beam

fixing - suitable for fixing to HT Beam



Angled data fascias allow data cabling to pass straight through PULSE, ensuring the integrity of cables which have a minimum bend radii (CAT5e, CAT6, etc)

CB - Clamp Bracket

Clamps are available for desk thicknesses between 18mm and 35mm
(Call for other desk thicknesses)

